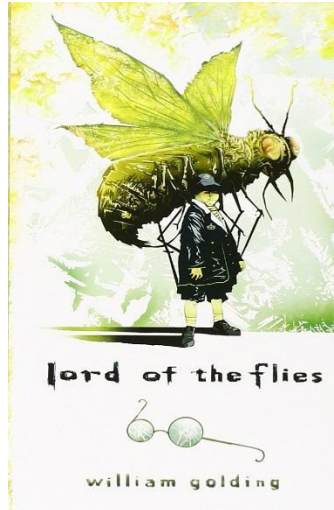


## Honors English 10 Summer Assignment 2019



**Required novel for Honors English 10:**  
*Lord of the Flies*  
by William Golding

This text is available for purchase in paperback or as a digital download at Barnes and Noble, Amazon.com, and other book vendors' websites. The school and local libraries have copies available for loan. We also have a limited number of texts available from the Fairfax High School English Department.

**ASSIGNMENT:** As you read *Lord of the Flies*, identify the author's use of the literary devices listed under "Content." Create a chart like the sample below. Label each device, provide two quotations/passages that display the device well, and document each example with proper MLA citation. Your example selections, when examined collectively, should reflect an insightful understanding of the entirety of the text.

**DUE DATES:** Reading and typed assignment are due third class period; there will also be a reading comprehension quiz during the second week of school.

**CONTENT:** 2 quotations/ passages for each of the following 10 devices:

Characterization	Irony
Contrast	Metaphor
Foreshadowing	Imagery
Personification	Simile
Symbolism	Mood

**FORMAT:** Typed, 12 point, Times New Roman, single spaced, correct MLA citations

## SAMPLE

Device	Textual Evidence
Imagery	<p>“He was clambering heavily among the creepers and broken trunks when a bird, a vision of red and yellow, flashed upwards with a witch-like cry; and this cry was echoed by another” (7).</p> <p>“All round the place of assembly the grey trunks rose, straight or leaning, and supported the low roof of leaves” (77).</p>

### MLA FORMAT

The direct quotation from the text is written with double quotation marks at the beginning and end.

After the end quotation mark, the page number is placed inside parentheses.

A period is placed after the parentheses.

**RUBRIC: The assignment will be evaluated using the below standards.**

Exceeds	Meets	Does Not Meet
<ul style="list-style-type: none"> <li>● Reflects sophisticated understanding of the text in its entirety</li> <li>● Reflects a complete understanding of all of the literary devices</li> <li>● Uses MLA citations and formatting accurately</li> </ul>	<ul style="list-style-type: none"> <li>● Reflects adequate understanding of text in its entirety</li> <li>● Reflects an understanding of most of the literary devices</li> <li>● Uses MLA citations and formatting correctly with a few minor errors</li> </ul>	<ul style="list-style-type: none"> <li>● Reflects an inaccurate understanding of entire text</li> <li>● Reflects a misunderstanding of some literary devices</li> <li>● Uses MLA citations and formatting incorrectly or inconsistently</li> </ul>

*If you have questions over the summer, please email Ms. Quinn at [KJQuinn@fcps.edu](mailto:KJQuinn@fcps.edu).*